

## Site Plan





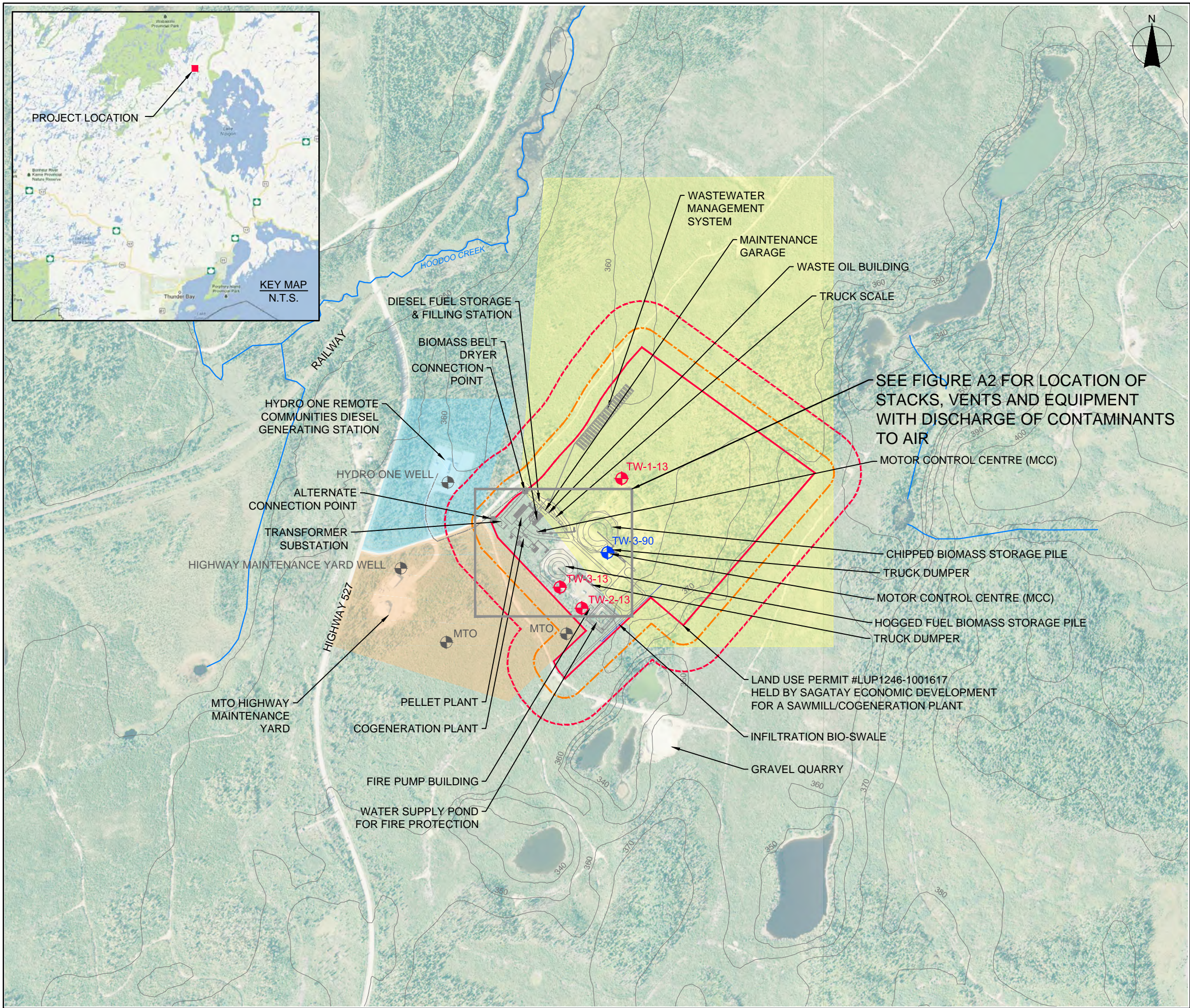
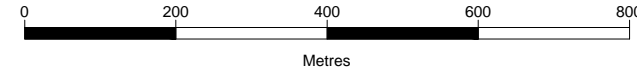


FIGURE A1  
WHITESAND FIRST NATION  
COGENERATION & PELLET MILL PROJECT  
DESIGN & OPERATIONS REPORT

SITE PLAN

- LEGEND**
- PROJECT LOCATION
  - STUDY AREA 50m SETBACK
  - STUDY AREA 120m SETBACK
  - MONITORING WELL LOCATION  
By Others, 1990
  - MONITORING WELL LOCATION  
By Neegan Burnside, 2013
  - PRIVATE WELL LOCATION  
By Others
  - AREA WITHDRAWN PER SECTION 35 OF  
THE MINING ACT (ORDER No. W-TB-122/11)
  - CROWN LAND DISPOSITION  
CL10395
  - PART 1, REFERENCE PLAN  
No. P-8060-55 ON HIGHWAY  
No. 527
  - EXISTING ELECTRICITY DISTRIBUTION LINE
  - CONNECTION POINT
  - EXISTING 10m CONTOURS INTERVAL (m asl)

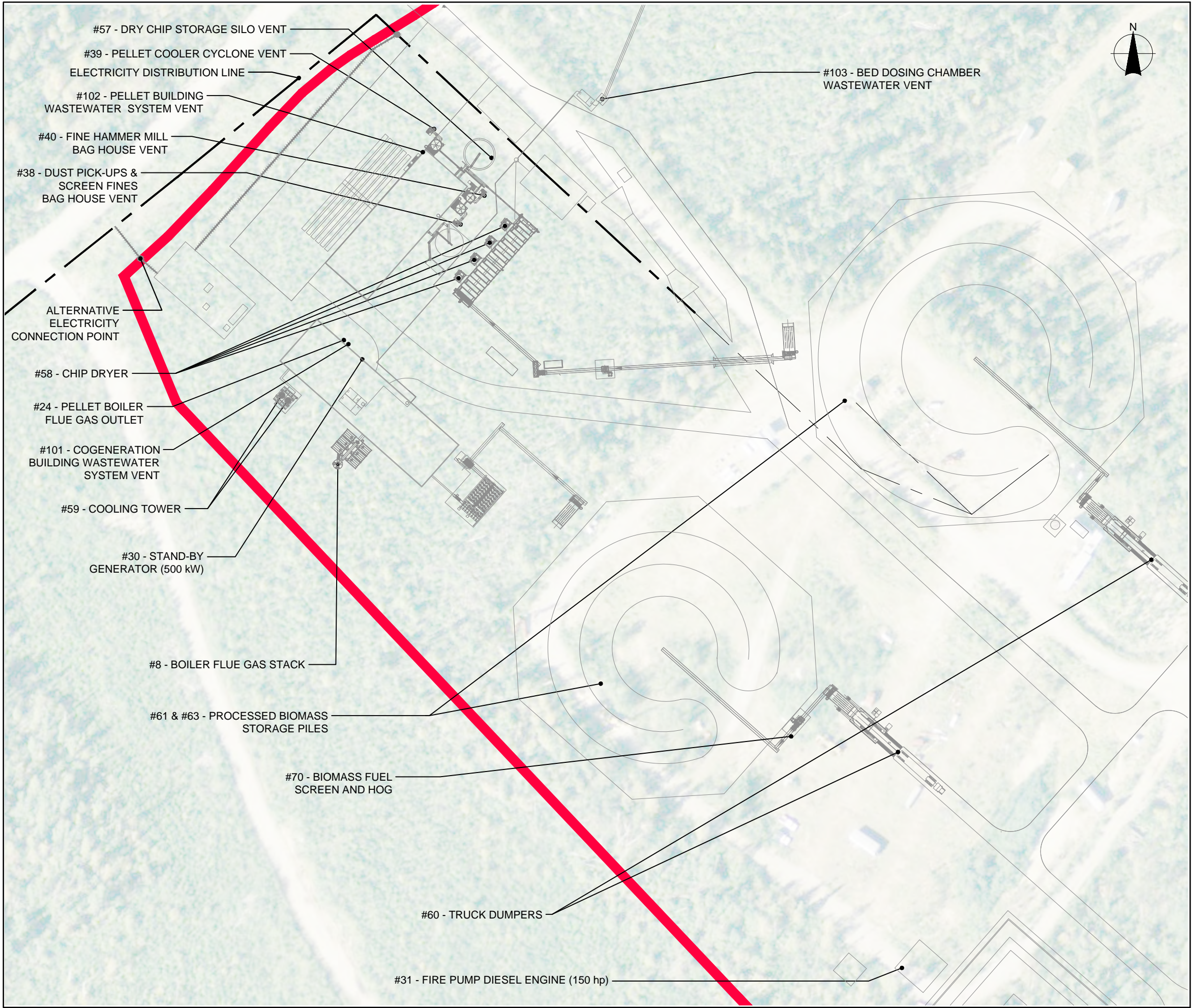
Air Photo Source:  
Background 2008 forest resource inventory air photo reproduced  
with the permission of Ministry of Natural Resources, © Queen's  
Printer for Ontario



1:10,000  
August 2014  
Project Number: 300030895  
Prepared by: C. Sheppard  
Projection: UTM Zone 16  
Datum: NAD83  
Verified by: C. Shilton

NEEGAN BURNSIDE





**FIGURE A2**

**WHITESAND FIRST NATION  
COGENERATION & PELLET MILL PROJECT**

**DESIGN & OPERATIONS REPORT**

**SITE PLAN  
AIR EMISSIONS**

**LEGEND**

 PROJECT LOCATION

Air Photo Source:  
Background 2008 forest resource inventory air photo reproduced  
with the permission of Ministry of Natural Resources, © Queen's  
Printer for Ontario

0 25 50 75 100  
Metres

1:1,250  
August 2014  
Project Number: 300030895

Projection: UTM Zone 16  
Datum: NAD83

Prepared by: C. Sheppard  
Verified by: C. Shilton

**NEEGAN BURNSIDE**



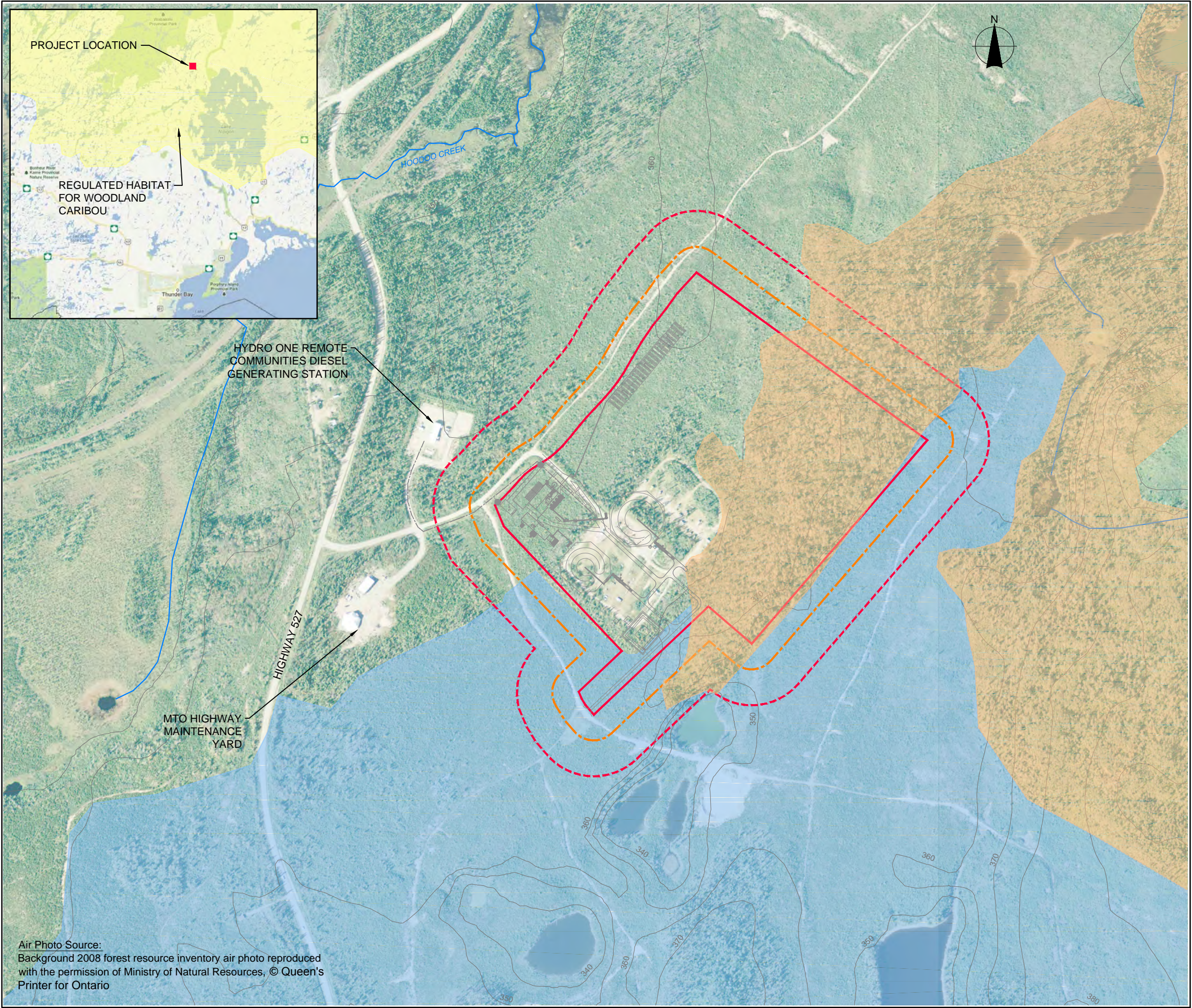


FIGURE A3

WHITESAND FIRST NATION  
COGENERATION & PELLET MILL PROJECT  
DESIGN & OPERATIONS REPORT

SITE PLAN  
NATURAL HERITAGE FEATURES

**LEGEND**

PROJECT LOCATION

STUDY AREA 50m SETBACK

STUDY AREA 120m SETBACK

Candidate Habitat for Species of Conservation Concern

Eastern Wood-Pewee

Olive-Sided Flycatcher

**Note:**  
Refer to the Natural Heritage Assessment, Part IV: Environmental Impact Study under a separate cover for further details regarding habitat impact mitigation measures and setback details.

0 100 200 400 600  
Metres

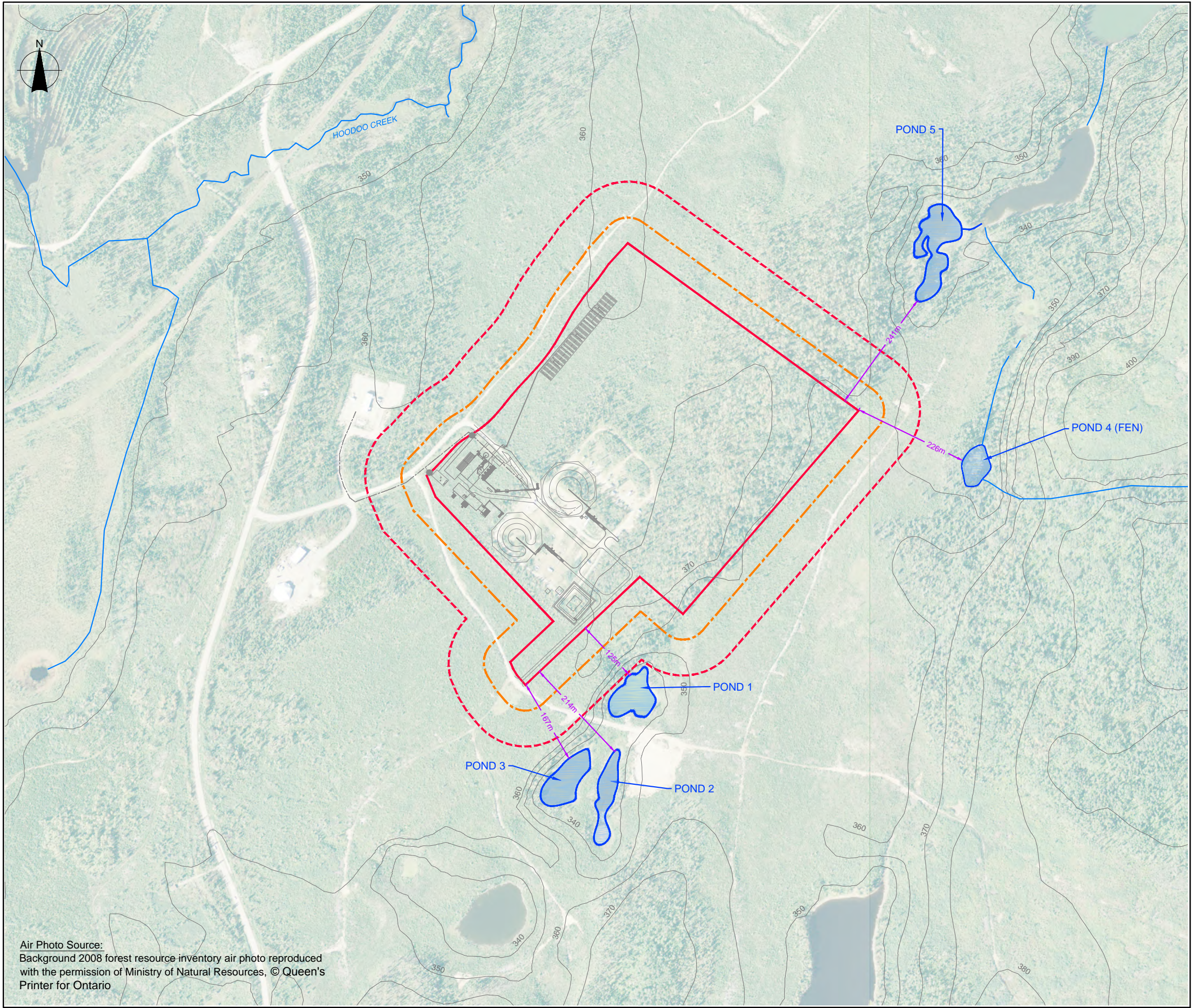
1:7,500  
August 2014  
Project Number: 300030895

Projection: UTM Zone 16  
Datum: NAD83

Prepared by: C. Sheppard  
Verified by: T. Radburn

NEEGAN BURNSIDE





Air Photo Source:  
Background 2008 forest resource inventory air photo reproduced  
with the permission of Ministry of Natural Resources, © Queen's  
Printer for Ontario

FIGURE A4

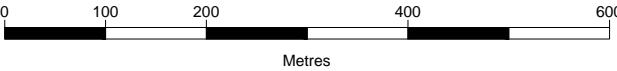
WHITESAND FIRST NATION  
COGENERATION & PELLET MILL PROJECT  
DESIGN & OPERATIONS REPORT

SITE PLAN  
WATER BODIES

LEGEND

- PROJECT LOCATION
- STUDY AREA 50m SETBACK
- STUDY AREA 120m SETBACK

**Note:**  
Refer to the Surface Water Assessment Report under a separate  
cover for further details regarding impact mitigation measures and  
setback details.



1:7,500  
August 2014  
Project Number: 300030895  
Prepared by: C. Sheppard

Projection: UTM Zone 16  
Datum: NAD83  
Verified by: T. Radburn

NEEGAN BURNSIDE

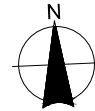




## FIGURE A5

### WHITESAND FIRST NATION COGENERATION & PELLET MILL PROJECT *DESIGN & OPERATIONS REPORT*

## NOISE RECEPTORS



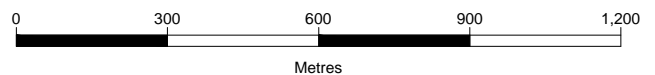
#### LEGEND

⊙ POR POINT OF RECEPTION

#### Air Photo Source:

Background air photo circa 2007 obtained from Google Earth Professional.

© Google Earth, use of products are subject to the Terms and Conditions of Licensed Google Earth Software.



1:15,000

August 2014

Project Number: 300030895

Projection: UTM Zone 16

Datum: NAD83

Prepared by: C. Sheppard

Verified by: C. Shilton

**NEEGAN BURNSIDE**